

A complex network graph visualization with numerous nodes and edges, representing a large-scale system or data structure. The nodes are represented by small circles of varying sizes and shades of gray, connected by thin, light gray lines. The overall structure is dense and interconnected, with some nodes appearing as hubs with many connections. The background is white, and the graph is positioned in the upper right quadrant of the page.

[NOTE] After power on, please press and hold the reset button for 10 seconds, this will reboot the camera and set all configurations to default.

[NOTE] This diagram and list are for reference only, and do not represent all cameras.

Generic Dome Camera Installation

2

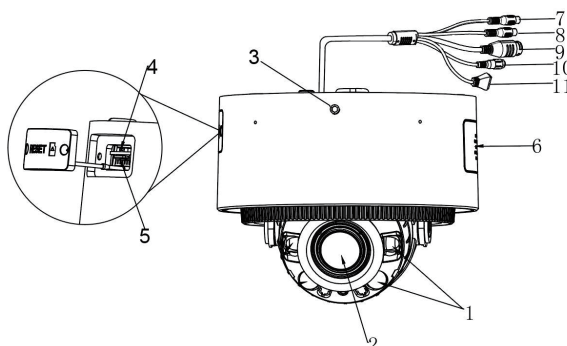
IP Camera	Mounting Screws
Drill Template	Expansion Bolts
RJ45 Waterproof Cover	Hex Key
Quick Start Guide	

IPC series

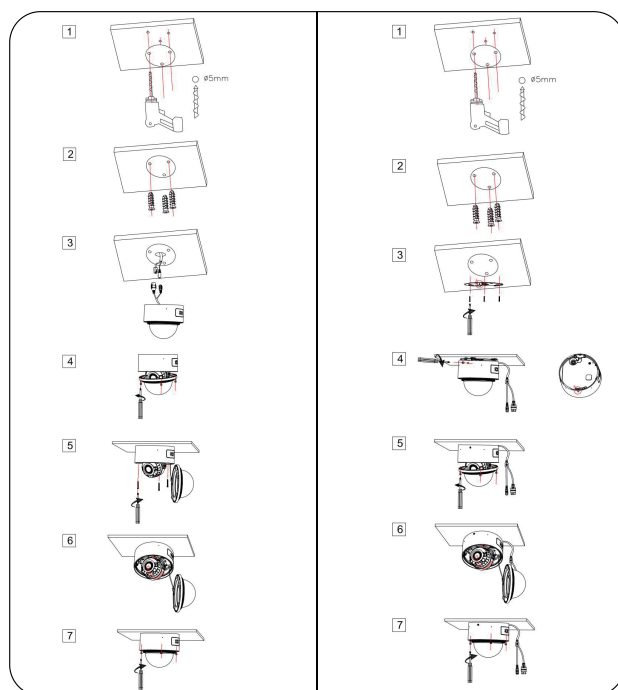
IPC series adopt IQSense technology embeds deep-learning algorithms into security cameras and video recorders to equip businesses and home-owners with smart tools to take security to the next level, both indoors and outdoors.

- Detects intrusion threats in real time and triggers alerts to users' mc
- Differentiates people and vehicles from other moving objects, allowing security teams to focus on real threats.
- The intelligent iQSense Algorithm focusing on human and vehicle targets, making it easier and more efficient to find specific targets when searching video footage.
- Select models of cameras offer built-in sirens and red-blue flashing lights alarms.

Cable Connection



1

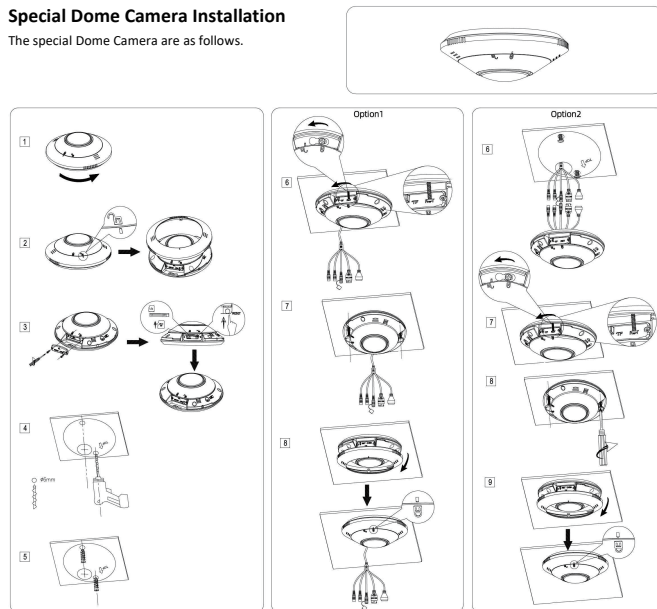


1. Confirm the installation location, stick the Drill Template on the wall, and then punch holes in the wall.
2. Install expansion bolts.
3. Thread the buried cable in the wall through the cable outlet hole in the wall and connect it to the camera cable. (To connect the cable please refer to Page 6).
4. Loosen the screws to remove the shield.
5. Tighten the screws and mount the camera base to the wall.
6. Adjust the angle and direction of the camera.
7. Put back the shield to complete the installation.

1. Confirm the installation location, stick the Drill Template to the wall, and then punch holes in the wall.
2. Install expansion bolts.
3. Tighten the screws to install the quick-installation bracket.
4. Adjust the fixing screws of the camera base and mount the camera onto the bracket.
5. Loosen the screws to remove the shield.
6. Adjust the monitoring direction.
7. Put back the shield to complete the installation.

Special Dome Camera Installation

The special Dome Camera are as follows.



1. Unlock the safety catch by turning it counterclockwise.
2. When the safety catch is unlocked, it can be removed.
3. After loosening the screw, you can install the SD card or use the reset button.
4. Confirm the installation location, stick the Drill Template to the wall, and then punch holes in the wall.
5. Insert expansion bolts into the drilled holes and hammer them in.

[NOTE] Please select the matching installation steps according to your installation scenario.

Option 1:

6. Pull the tail line out of the outlet hole, align the camera with the drill template and tighten the screws to secure it.
7. Tighten the screws to fix the camera onto the wall.
8. Attach the safety catch and turn clockwise to lock it to prevent it from falling off.

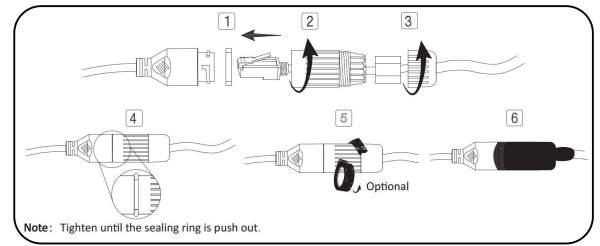
Option 2:

6. To connect the cables, please refer to Page 6 for details.
7. Align the camera with the drill template and tighten the screws to secure it.
8. Tighten the screws to fix the camera onto the wall.
9. Attach the safety catch and turn clockwise to lock it to prevent it from falling off.

4

Connecting Network Cable

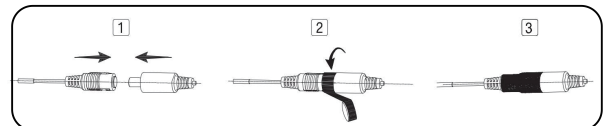
1. Attach the seal ring to the copper interface and insert the cable into the Ethernet copper interface.
2. Screw the waterproof bolt in.
3. Screw in the waterproof bolt lid.
4. Tighten until the sealing ring is push out.
5. Optional: Use the waterproof tape to cover the RJ45 waterproof Cover.
6. Finish the installation.



Note: Tighten until the sealing ring is push out.

Connecting Power cable

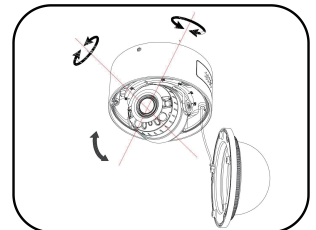
1. Connect the male and female ends of the power cord.
2. Wrap the male and female connectors with insulating tape.
3. Use the Waterproof Cover to cover the connection between the male and female heads.



Adjusting the camera angle

Steps:

1. Loosening the fixing screw with a screwdriver.
2. Rotating Dome Camera with shroud removed.



5

4. CONNECTING IP CAMERA TO NVR WITH POE LOCALLY

Connect the camera to the PoE port of the NVR.



[NOTE] The pictures are for reference only and do not represent actual cameras or devices.

5. CONNECTING IP CAMERAS TO NVR FROM LAN

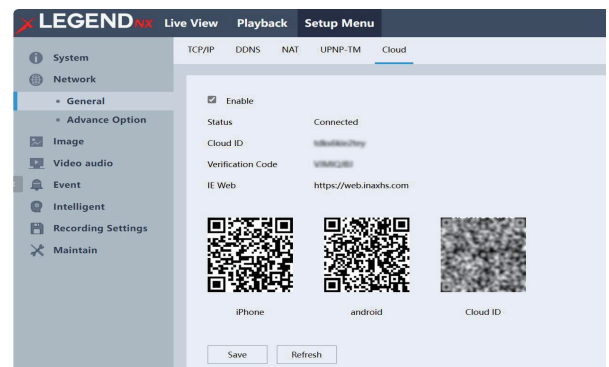
Connect the NVR, PoE switch and cameras within the same LAN. (Note: The pictures are for reference only.)



6. ADD THE CAMERA TO THE APP

You can install the APP by following the steps below:

1. Log in to the web interface of IPC, after you have activated your device normally.
2. Go to Setup Menu → Network → General → Cloud.
3. Scan the QR Code to download the Android and IOS Apps.
4. Open the vEye Pro App on your smartphone.
5. Log in to your registered account.
6. Click the option in the upper left corner to open the 'Menu'.
7. Go to Live View page, then click '4' in the upper right corner to add a device.
8. Allow the app to access the devices, scan the QR code as shown below.
9. Set a name for the device so you can easily identify it from the list, and you can use the installation location for name settings.
10. Tap 'Save', then you will be able to 'Start Live View'.
11. Or find the newly added device from the device menu, and click the play button in the triangle to start real-time previews.



[NOTE] You can also install the App from the IOS Store or Google Play.

7. CAUTION



This symbol is intended to alert users of important operations and maintenance instructions within the documentation accompanying the product.



This symbol is intended to alert users of uninsulated 'dangerous voltage' within the product enclosure that may be strong enough to pose a risk of electric shock to untrained personnel.



CAUTION:

RISK OF ELECTRIC SHOCK. DO NOT OPEN

SHOCK

CAUTION: To reduce the risk of electric shock. Do not remove cover or back. There are no user serviceable parts inside. Refer products to suppliers.

CAUTION

To prevent electric shocks and risk of fire hazard, do not an specified power source.



CAUTIONS:

- Please note the cameras operating temperature and its environment requirements. Avoid using the cameras in extremely high or low temperatures. The recommended operating temperature is -10~ +50°C. To avoid damage to the light processor (CMOS), do not expose the camera lens to direct sunlight or other bright light sources.
- Do not mount the camera near radiators or heat sources.
- The power supply must match the requirements of the camera. Ensure the output voltage, current, voltage polarity and operating temperature are within the range required by the camera power supply.
- During a thunderstorm, please ensure an anti-thunder device is connected or disconnect the power supply to the camera.

6

7